

ZEITZ
MOCAA
EVENTS



2018

Λ | THE ALEIT GROUP



ZEITZ MOCAA EVENTS | PORTFOLIO

PRESENTED BY **THE ALEIT GROUP**

WWW.ZEITZMOCAAEVENTS.COM

WWW.THEALEITGROUP.COM





ZEITZ MUSEUM OF CONTEMPORARY ART AFRICA (ZEITZ MOCAA)

INTRODUCTION

Zeitz Museum of Contemporary Art Africa (Zeitz MOCAA) collects, preserves, researches, and exhibits twenty-first century art from Africa and its Diaspora; hosts international exhibitions; develops supporting educational and enrichment programmes; encourages intercultural understanding; and guarantees access for all.

Over one hundred galleries are dedicated to a permanent collection; temporary exhibitions; and Centres for Art Education, Curatorial Excellence, Performative Practice, Photography, the Moving Image, and the Costume Institute. Zeitz MOCAA was established through a partnership between the V&A Waterfront and Jochen Zeitz in 2013. Mark Coetzee is the Executive Director and Chief Curator.

As a not-for-profit public cultural institution, donations to Zeitz MOCAA and philanthropic support from individuals, corporations and foundations are an integral part of helping the museum fulfill its mission.



DEAR PROSPECTIVE CLIENT WELCOME

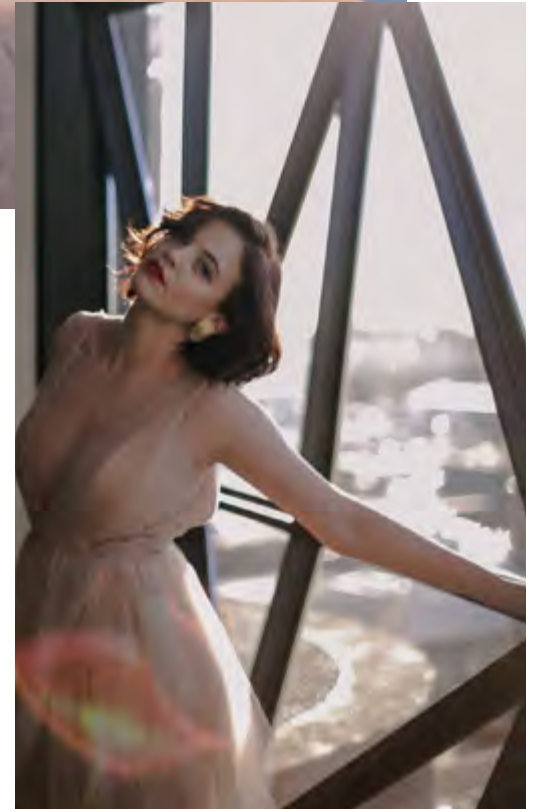
INTRODUCTION

The Aleit Group, renowned for its spectacular, high-end events and weddings for the past 17 years, has been appointed by the Zeitz Museum of Contemporary Art Africa (Zeitz MOCAA) as the exclusive restaurant and event operator throughout the museum. This includes the management of the multi-functional event and eatery space on level six, as well as all events hosted within the museum.

For anyone looking to host a remarkable event, the museum space is unlike anything on the continent. In fact, it is arguably unlike anything in the world.

Available for private functions, after hours, the BMW Atrium is an exceptional space for arrival drinks and canapés.

The level six multi-functional event and eatery space looks out onto the museum's rooftop sculpture garden. It truly is a breathtaking event venue which can accommodate up to 200 guests with a 270-degree view of Cape Town, and possibly the best view of Table Mountain in the city.



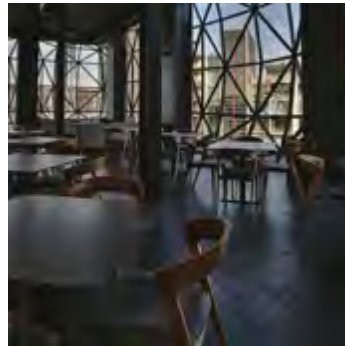
HAVE WE PIQUED YOUR INTEREST? IF SO, PLEASE READ ON.

CONTENTS



VENUE PARTICULARS

VENUE HIRE OPTIONS, RULES
AND REGULATIONS



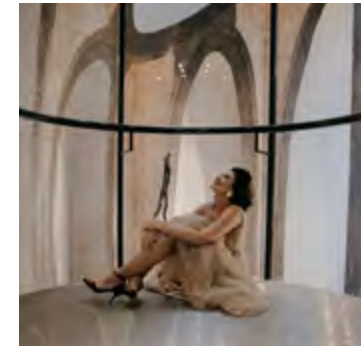
OFFERING & SERVICE PROVIDERS

OVERVIEW OF OFFERING
AND SERVICE PROVIDERS



GET IN TOUCH

CONTACT DETAILS AND
DIRECTIONS



ATTRACTIONS

NEARBY ACTIVITIES AND
ATTRACTIONS





VENUE PARTICULARS

OPENING & CLOSING TIMES

The venue hire is based on an event ending at 00h00 on the event date.

Due to strict noise regulations and being accommodating to our neighbour, The Silo Hotel, regrettably no access will be granted to the Sculpture Garden after 22h00.

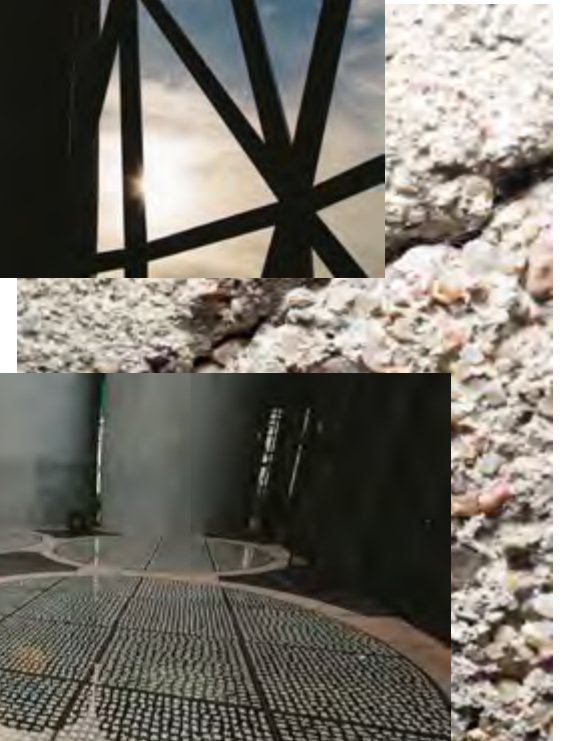
Should you like your event time to extend after 00h00, this will be at the sole discretion of the venue management.

SITE INSPECTION AND VIEWINGS

Please note: site inspections and viewings are strictly by appointment only - 09h00 - 10h00 or 16h00 - 17h00.

BRANDING

Please note: no branding is permitted in any museum spaces, including the BMW Atrium and the Sculpture Garden. Branding will only be permitted in the Venue on Level 6.





VENUE PARTICULARS

SETUP TIMES

BMW Atrium events - setup may begin at 18h00 in the BMW Atrium, after the museum has closed to the public - Wednesday to Monday.

Venue on Level 6 events - setup may begin from 17h00/17h30 - Wednesday to Monday. The exact time will be confirmed with the client prior to the event date.

Tuesday events - setup may begin from 09h00 on Tuesdays, when the museum is closed to the public.
This has to be arranged with the venue management prior to the event date.

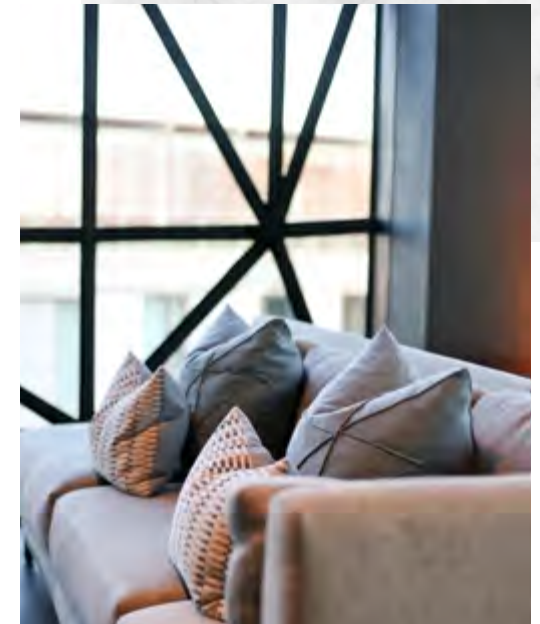
Changes in setup times are dependent on availability and on the complexity of your event.

VENUE BOOKINGS & CHARGES

A 50% deposit of the total venue hire is required to secure an event date along with a signed copy of the Standard Terms & Conditions and proof of payment.
Card facilities are available on request.

A quotation for a provisional booking is valid for five (5) days. A refundable deposit of R10 000.00 including VAT is required for any shortages, damages or breakages to any property, the balance of which will be repaid within two weeks after the event. The client will be held responsible for any and all shortages, damages or breakages that might occur to stock.

Please note a cancellation constitutes a non-refundable venue hire.



OPTION 1 | LEVEL 6 + SCULPTURE GARDEN

R 82 500 prices may be reviewed at any moment

The venue hire includes the exclusive use of the Venue on Level 6 of the Zeitz MOCAA, as well as the use of the Sculpture Garden - which can only be accessed from the venue space. Please note: No access to the Sculpture Garden after 22h00.

This venue can accommodate up to 200 guests.

Please note that your guests will use a side entrance into the museum if this option is taken.

**/ LEVEL 6, AN EATERY DURING THE DAY, HAS FURNITURE THAT IS AVAILABLE TO HIRE UPON REQUEST.
/ THE BOOKING DEPOSIT FOR OPTION 1 IS 50% OF THE VENUE HIRE AMOUNT.**

/ PLEASE NOTE THAT ALL PRICING EXCLUDES VAT.

INCLUSIONS

- / Exclusive use of the Venue on Level 6
- / Use of the Sculpture Garden on Level 6
- / Back-up Generator Capacity
- / Disabled Access
- / Monitored Security
- / Airconditioning
- / Terrace
- / Fully-licensed Bar
- / Café tables and chairs (120 pax)

EXCLUSIONS

- / The Zeitz MOCAA BMW Atrium
- / Cutlery, Crockery, Glassware
- / Furniture (loungue pockets)
- / Décor
- / Entertainment
- / Food
- / Beverages
- / Staffing + Physical Security
- / AV
- / Parking
- / Cleaning of the venue space

OPTION 2 | LEVEL 6 + BMW ATRIUM

R 82 500 + R 20 000 prices may be reviewed at any moment

If you wish to make your event even more spectacular, we recommend that you hire the Zeitz MOCAA BMW Atrium in addition to the Venue on Level 6. This option is available for events of a maximum of 200 guests.

You will be able to use the BMW Atrium for a maximum of 90 minutes, after which your guests will make their way upstairs to the Venue on Level 6. The BMW Atrium is accessed through the main museum doors on the ground level. When your guests enter, they will be welcomed by a towering view of magnificent Atrium silos.

Please note that no large items are permitted in the BMW Atrium or in museum spaces. This includes all hiring and decorations. All furniture and hired items will have to be approved by venue management prior to the event date.

/ BY BOOKING BOTH VENUES, THE BMW ATRIUM IS PROVIDED AT A SPECIAL RATE OF R20 000 EXCL. VAT

/ PLEASE NOTE THAT ALL PRICING EXCLUDES VAT

INCLUSIONS

- / Exclusive use of the Venue on Level 6 & the BMW Atrium
- / Use of the Sculpture Garden on Level 6
- / Back-up Generator Capacity
- / Disabled Access
- / Monitored Security
- / Airconditioning
- / Terrace
- / Fully-licensed Bar
- / Café tables and chairs (120 pax)

EXCLUSIONS

- / Cutlery, Crockery, Glassware
- / Furniture (lounge pockets)
- / Décor
- / Entertainment
- / Food
- / Beverages
- / Staffing
- / AV
- / Parking
- / Staffing + Physical Security
- / Cleaning of the venue spaces



OPTION 3 | BMW ATRIUM

R 75 000 prices may be reviewed at any moment

The BMW Atrium is accessed through the museum doors on the ground level and can accommodate 200 guests. The BMW Atrium is the heart of the museum, connecting what were once two separate buildings. Cathedral-like, it rises 33m high, carved out of the original silo bins, and is an architectural wonder.

Please note that no large items are permitted in the BMW Atrium or in museum spaces. This includes all hiring and decorations. All furniture and hired items will have to be approved by venue management prior to the event date.

/ THE BOOKING DEPOSIT FOR THE BMW ATRIUM IS 50% OF THE VENUE HIRE AMOUNT OF R75 000, WHICH IS THE STANDARD VENUE RATE FOR THE BMW ATRIUM ON ITS OWN.

/ PLEASE NOTE THAT ALL PRICING EXCLUDES VAT.

INCLUSIONS

- / Exclusive use of the BMW Atrium
- / Back-up Generator Capacity
- / Disabled Access
- / Monitored + Physical Security
- / Air-conditioning

EXCLUSIONS

- / Zeitz MOCAA Level 6
- / Cutlery, Crockery, Glassware
- / Furniture
- / Décor
- / Entertainment
- / Food
- / Beverages
- / Staffing + Ushers
- / AV
- / Parking





OFFERING & SERVICE PROVIDERS

COORDINATION

Correspondence between us will allow us to assess your individual needs and preferences. We will be at your beck and call and allow you to have a custom, stress-free experience with us on board.

Should you confirm your event with Zeitz MOCAA Events, you are entitled to an hour long free consultation with our coordination team. During this consultation, we will advise you on different service professionals and brainstorm for your occasion.

We work with leading service providers who will ensure that your event is seamless.

Our venue management team members are ready to coordinate all aspects of your event, however, we are happy to put the client in contact with our service providers if need be.



OFFERING & SERVICE PROVIDERS

HOSPITALITY

Zeitz MOCAA Food and Events has the exclusive food & beverage rights for your event.

CUISINE

In instances where an entire event has special dietary requirements due to religious beliefs, the Executive Chef will gladly suggest an alternative catering company. Kosher & Halaal catering will be outsourced to a preferred supplier and there will be an additional fee of R25 000 excluding VAT for use of the kitchen facilities.

However, if there are only a few guests with special dietary requirements, then the Executive Chef will outsource these few meals and we will invoice you for them.

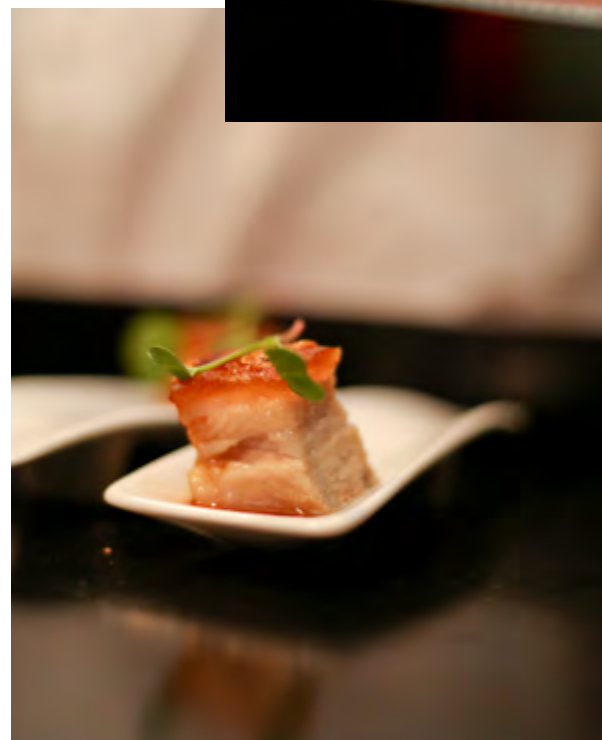
Please note: No Tastings

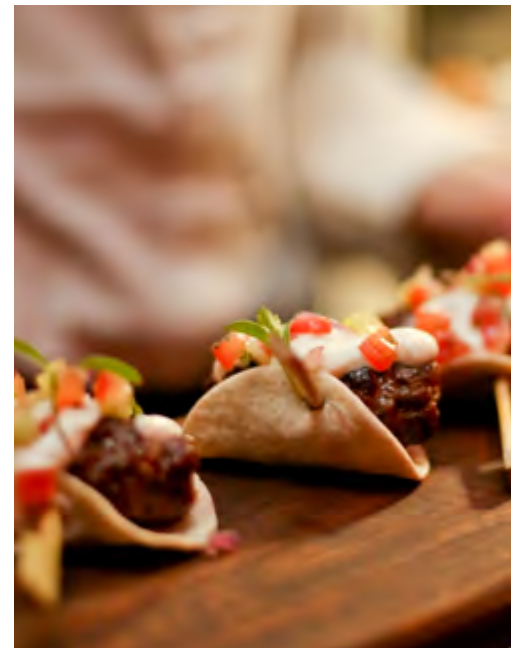


MENU COST | GUIDELINE

- / Canapés (4-10 items): Ranging from R150 to R300 per person.
- / Bowl food (4-8 items): Ranging from R300 to R500 per person.
- / 3-Course plated menu: Starting at R650 per person, dependent on menu choice.
- / Food Stations: R2000 per station surcharge.

*Surcharge applicable to limited pre-selected options.





OFFERING & SERVICE PROVIDERS

BAR & STAFFING

Bar service and waitrons will be managed by Zeitz MOCAA Food and Events. They offer a comprehensive service, which is sure to meet all your staffing, waitron and beverage expectations.

This service will not be outsourced to the client, caterer or any other party involved.

Zeitz MOCAA Food is fully licensed.

Various bar options and beverage lists are available on request; and is to be confirmed prior to the function.



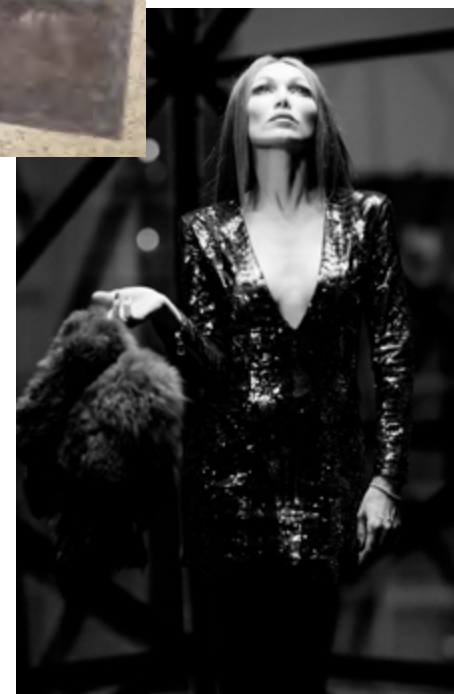
OFFERING & SERVICE PROVIDERS

SOUND | MUSIC & ENTERTAINMENT

We work with leading AV & Sound suppliers who will ensure that your event is seamless.

In addition, we have relationships with entertainment specialists who will be able to cater to any event requirements and all tastes.

Quotes are available upon request.



SHOOTS

THE VENUE ON LEVEL 6

All requests for shoots within the Venue on Level 6 may be directed to Nina van Deventer on nina@nvdproperty.co.za

Still shoot - maximum of 15 pax - 10 hour shoot day - R 30 000 ex VAT
Film shoot - maximum of 50 pax - 12 hour shoot day - R 50 000 ex VAT

Please note that the above rates only grant access to the Venue on Level 6. The Sculpture Garden, the BMW Atrium and other museum spaces are not included in these rates.

Please note that additional staff, security and cleaning costs may apply based on the shoot brief.

THE BMW ATRIUM, THE SCULPTURE GARDEN & ALL MUSEUM SPACES

Applications for commercial productions where Zeitz MOCAA acts only as a location are to be directed to Zeitz MOCAA - Tiffany Andrews on tiffany.andrews@zeitzmocaa.museum.

All applications for exterior shoots need to be directed to Penny Randall at the V&A Waterfront Permit Office on prandall@waterfront.co.za.

The starting costs for shoots at Zeitz MOCAA are inclusive of VAT:

Half day - 4 hours - R20 000

Full day - 10 hours - R75 000

All shoots at Zeitz MOCAA, unless otherwise advised upon, can only take place before or after operating hours Wednesdays to Mondays, 08h00 - 09h30 and 18h30 - 02h00, or as required; and Tuesdays, 08h00 - 18h00.





Café Tables & Chairs

[seating 120 pax]



Included in venue hire



Lounge Furniture

[seating up to 50 pax]



Charged at R 1 000.00 per person ex.VAT

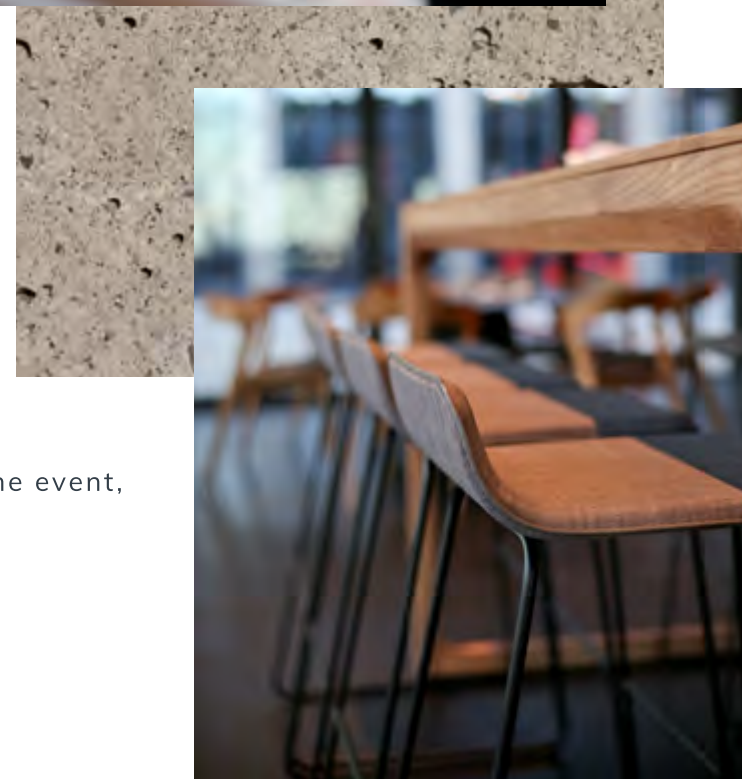
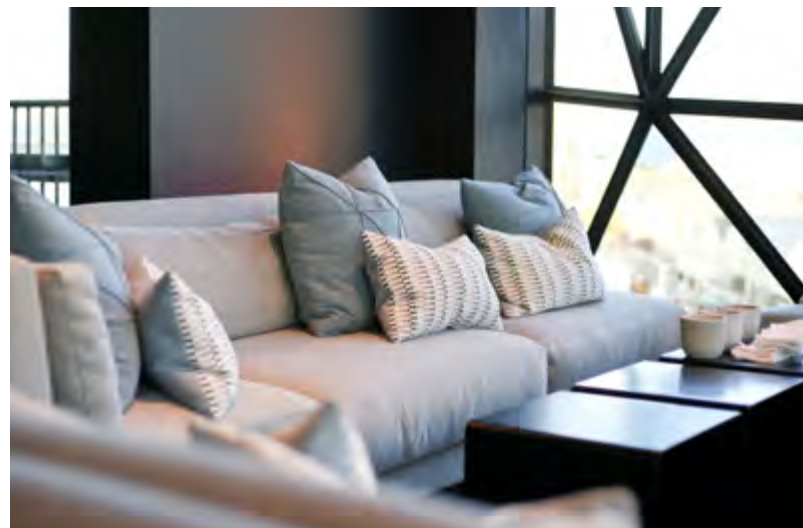


Management Fee

[includes full event coordination – prior to the event, on the day of the event, and after the event]



Charged at 15% of the total venue hire and services quoted







GET IN TOUCH

CONTACT US

Should you wish to make a booking for a venue space, or should you have any questions - please do not hesitate to contact us:

TATUM MORLEY-SAIEVA

info@zeitzmocaaevents.com

+27 21 001 1022

+27 82 384 9233

Silo District

V&A Waterfront

Cape Town

South Africa

8002





DIRECTIONS

CAPE TOWN INTERNATIONAL AIRPORT

Matroosfontein, Cape Town, 7490 // **22 min (21.6 km) N2**

Take Airport Approach Rd to Settlers Way/N2 in Kanana
7 min (4.2 km)

Continue on N2 to Cape Town City Centre
13 min (16.4 km)

Continue on Walter Sisulu Ave. Take S Arm Rd to Fish Quay in V & A Waterfront
3 min (950 m)

ZEITZ MUSEUM OF CONTEMPORARY ART AFRICA

V&A Waterfront, Silo District, S Arm Road, Waterfront, Cape Town, 8001

DURBANVILLE

Cape Town // **30 min (33.0 km) N1**

Get on N1 in Eikenbosch from Fairtrees Rd and Eversdal Rd
13 min (8.6 km)

Follow N1 to Walter Sisulu Ave in Cape Town City Centre
16 min (23.4 km)

Continue on Walter Sisulu Ave. Take S Arm Rd to Fish Quay in V & A Waterfront
3 min (950 m)

ZEITZ MUSEUM OF CONTEMPORARY ART AFRICA

V&A Waterfront, Silo District, S Arm Road, Waterfront, Cape Town, 8001

ATTRACTIONS

ACTIVITIES & NEARBY ATTRACTIONS

- / Zeitz MOCAA Exhibitions & Galleries
- / The Silo Hotel
- / V&A Waterfront
- / Two Oceans Aquarium
- / Shimansky Diamond Tour
- / Clock Tower
- / The Wheel of Excellence
- / The Chavonnes Battery Museum
- / Nobel Square
- / Boat Tour

